



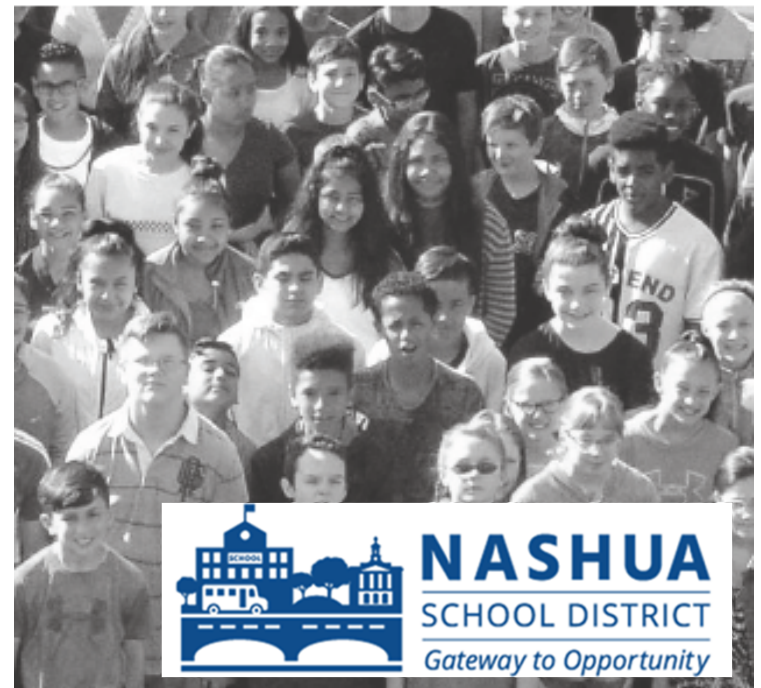
Presentation to JSSBC for:

Nashua Middle Schools Projects

Nashua, New Hampshire

April 22, 2021

“Building a diverse learning community by encouraging students to open their eyes to explore, their minds to create, and their hearts to accept.”



Agenda

1. Projects in Construction Update
 - a. Fairgrounds Middle School
 - b. Pennichuck Middle School
2. Projects in Design Updates
 - a. New Middle School
3. Project Schedule

AGENDA |

“Building a diverse learning community by encouraging students to open their eyes to explore, their minds to create, and their hearts to accept.”



FAIRGROUNDS MIDDLE SCHOOL



“Building a diverse learning community by encouraging students to open their eyes to explore, their minds to create, and their hearts to accept.”

- Planning the next punch list inspection.
- Furniture review meeting and review.
 - Follow up discussions.
 - Layouts and selections.
 - Adjustments.
 - Alternates.
 - Budget vs estimate.
 - Meet the needs of the new spaces, modified spaces.
 - Upgrade furniture for existing spaces.
 - Needs/wants List.

Project Update

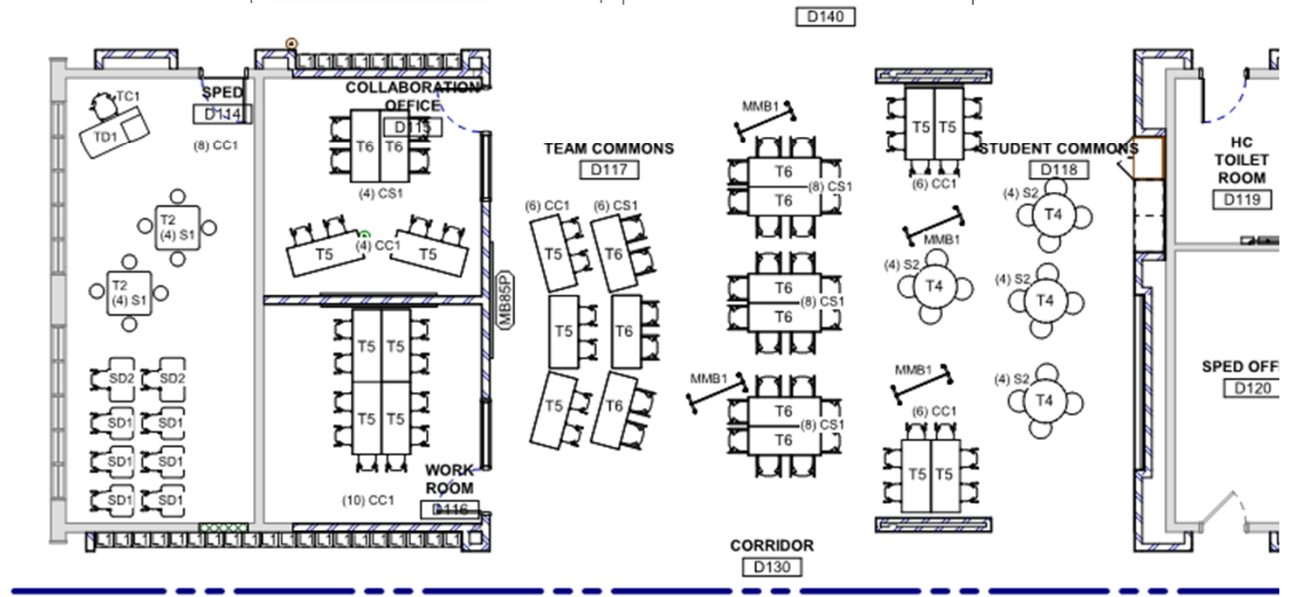


"Building a diverse learning community by encouraging students to open their eyes to explore, their minds to create, and their hearts to accept."



FAIRGROUNDS MIDDLE SCHOOL

- Furniture layouts and selections.



Project Update

"Building a diverse learning community by encouraging students to open their eyes to explore, their minds to create, and their hearts to accept."

FAIRGROUNDS MIDDLE SCHOOL

PENNICHUCK MIDDLE SCHOOL



“Building a diverse learning community by encouraging students to open their eyes to explore, their minds to create, and their hearts to accept.”

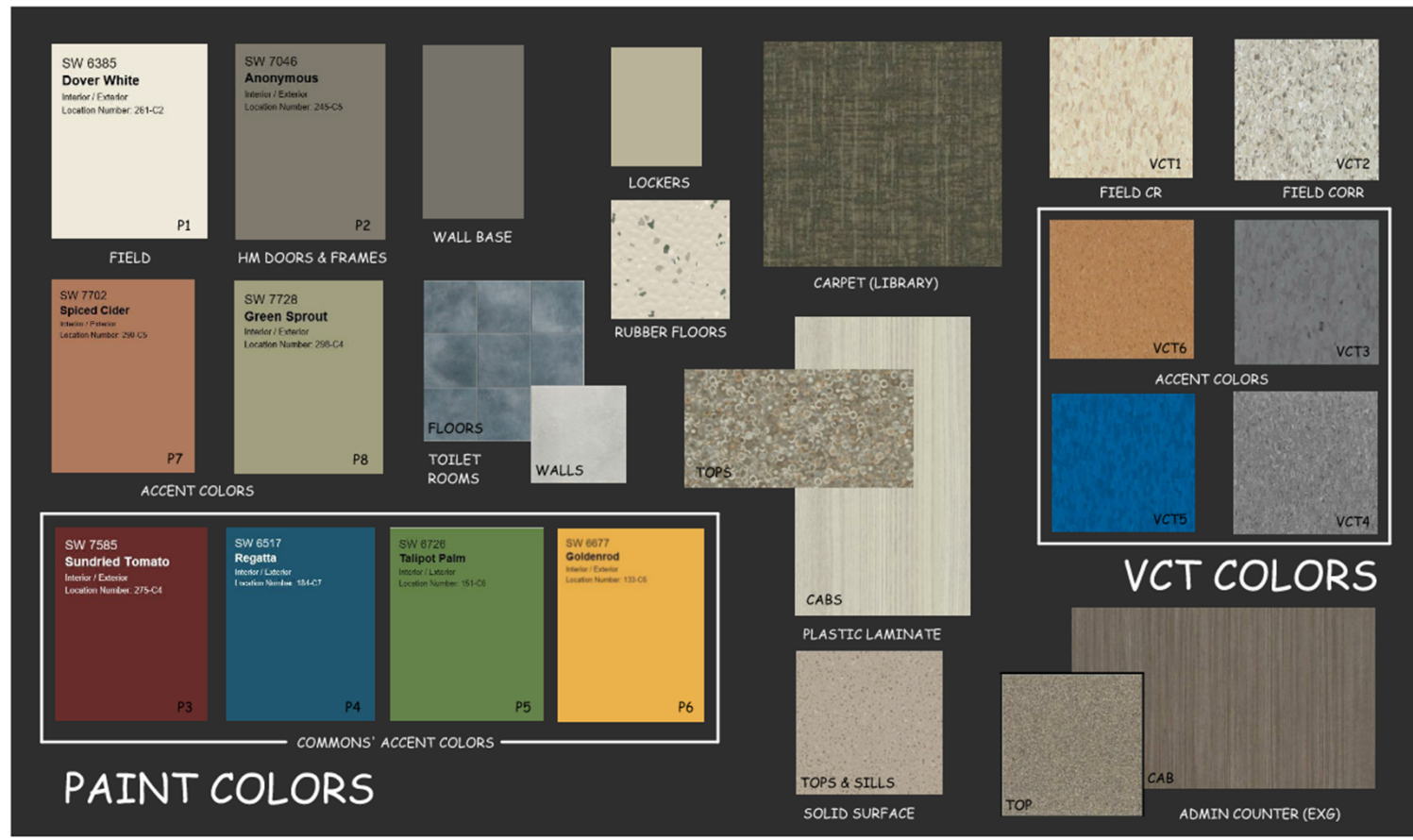
- Alteration of Terrain permit acquired.
 - Required by NH Department of Environmental Services.
 - Generally, any project that disturbs 100,000 SF contiguous terrain.
- Intersection design progress.
 - 25% review issued and reviewed.
 - Utility easement review.
- Submittal and rfi review underway.
- Interior room signage/numbering.
 - Plans being created for Owner review and Harvey use.
- Interior finishes review meeting.

Project Update

"Building a diverse learning community by encouraging students to open their eyes to explore, their minds to create, and their hearts to accept."

PENNICHUCK MIDDLE SCHOOL

- Interior finishes meeting.



**NASHUA SCHOOL DISTRICT
PENNICHUCK MIDDLE SCHOOL
ADDITIONS AND RENOVATIONS**

COLOR SCHEME BOARD

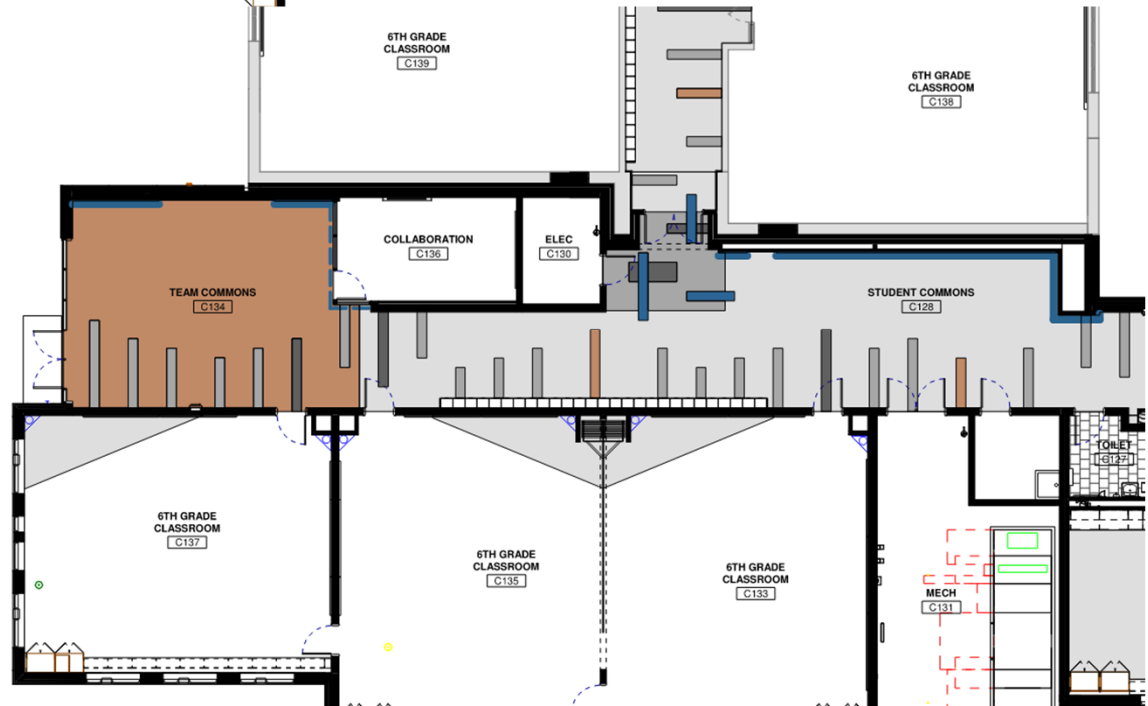
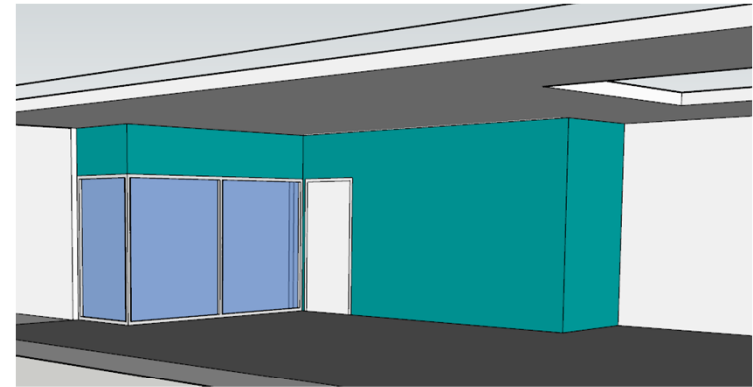
11/14/20

Project Update |

“Building a diverse learning community by encouraging students to open their eyes to explore, their minds to create, and their hearts to accept.”

PENNICHUCK MIDDLE SCHOOL

- Interior finishes meeting.



Project Update

"Building a diverse learning community by encouraging students to open their eyes to explore, their minds to create, and their hearts to accept."

PENNICHUCK MIDDLE SCHOOL

NEW NASHUA MIDDLE SCHOOL



“Building a diverse learning community by encouraging students to open their eyes to explore, their minds to create, and their hearts to accept.”

- Continued efforts on Construction Documents
 - Issued a 75% review set to NSD
 - Next submission is 95% review set in May
- Project Scheduling Review and Update
 - Land Acquisition Continuing (Feb to May 2021)
 - City Planning and Permitting in Process (March to June 2021)
 - Environmental Permitting (May to August 2021)
 - Document Issuance, Pricing, and Approvals (May to July 2021)
 - Construction Mob and Construction (Summer 2021 to Fall 2023)

Project Update |

“Building a diverse learning community by encouraging students to open their eyes to explore, their minds to create, and their hearts to accept.”

NEW NASHUA MIDDLE SCHOOL

- Cafeteria when entering the School



Project Update |

“Building a diverse learning community by encouraging students to open their eyes to explore, their minds to create, and their hearts to accept.”

NEW NASHUA MIDDLE SCHOOL

- Cafeteria when entering the School



Project Update |

“Building a diverse learning community by encouraging students to open their eyes to explore, their minds to create, and their hearts to accept.”

NEW NASHUA MIDDLE SCHOOL

- Cafeteria looking down to Performance Platform from Community Stair



Project Update |

“Building a diverse learning community by encouraging students to open their eyes to explore, their minds to create, and their hearts to accept.”

NEW NASHUA MIDDLE SCHOOL

- Cafeteria looking down to Performance Platform from Community Stair

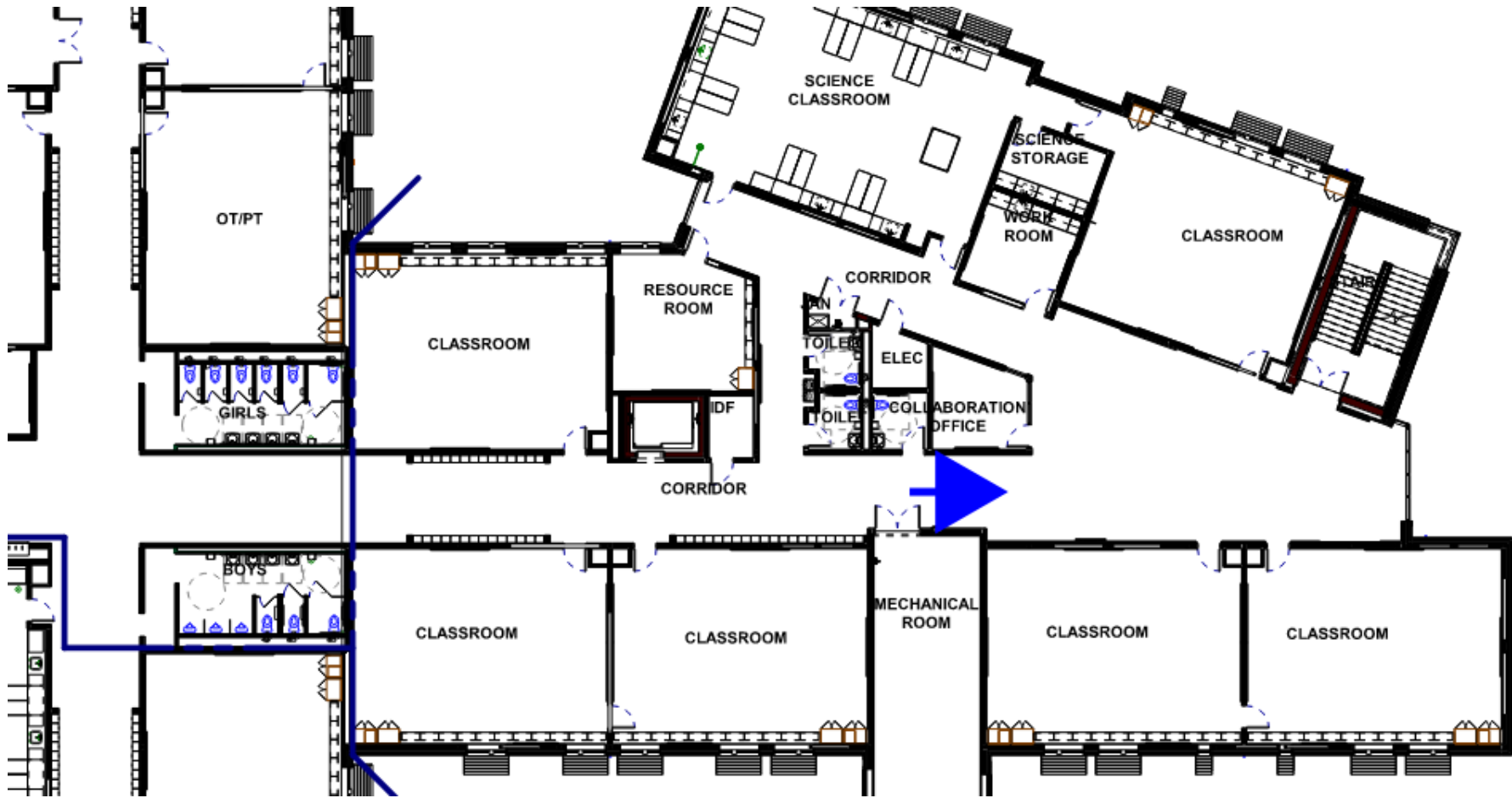


Project Update |

“Building a diverse learning community by encouraging students to open their eyes to explore, their minds to create, and their hearts to accept.”

NEW NASHUA MIDDLE SCHOOL

- Entering Student Commons in Classroom wings



Project Update |

“Building a diverse learning community by encouraging students to open their eyes to explore, their minds to create, and their hearts to accept.”

NEW NASHUA MIDDLE SCHOOL

- Entering Student Commons in Classroom wings



LINCOLN BROWN ILLUSTRATION

Project Update |

“Building a diverse learning community by encouraging students to open their eyes to explore, their minds to create, and their hearts to accept.”

NEW NASHUA MIDDLE SCHOOL

- Student Commons in Classroom wings looking back towards Classroom Hub



Project Update |

"Building a diverse learning community by encouraging students to open their eyes to explore, their minds to create, and their hearts to accept."

NEW NASHUA MIDDLE SCHOOL

- Student Commons in Classroom wings looking back towards Classroom Hub



Project Update |

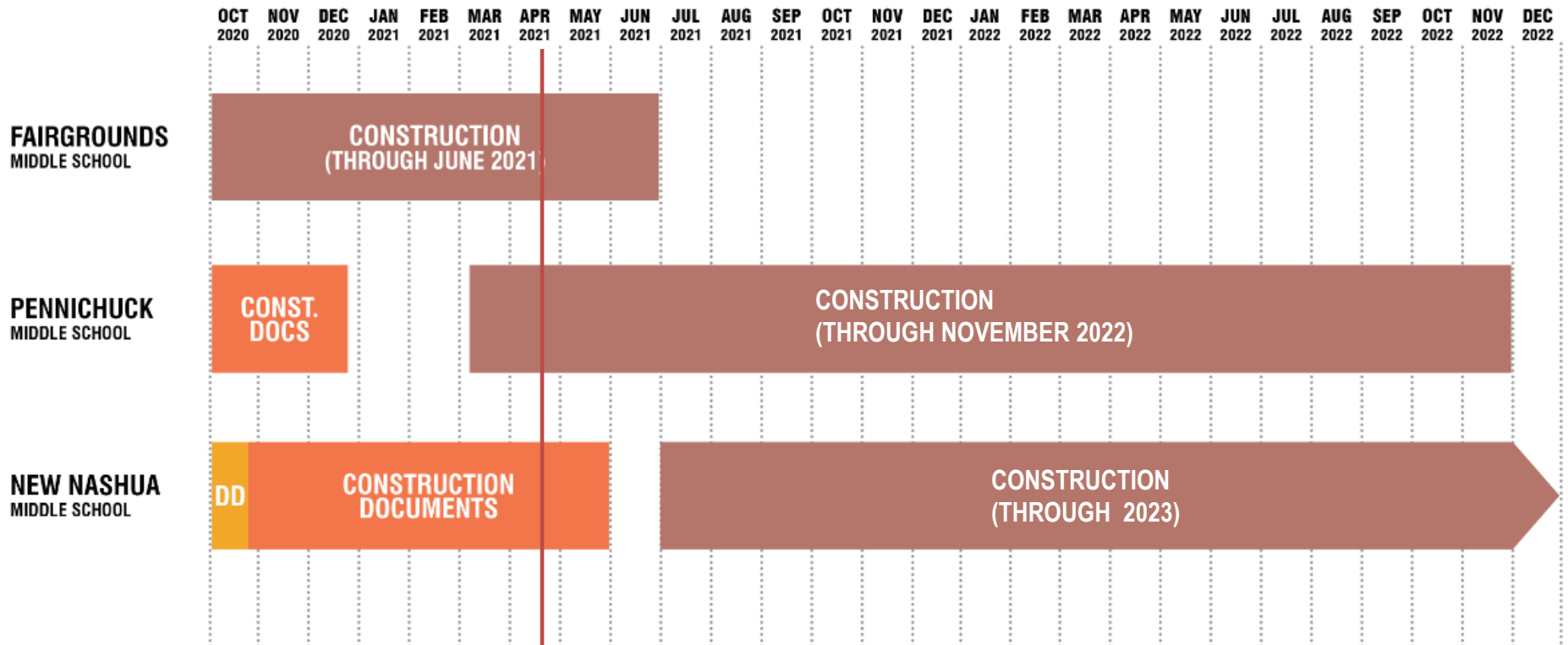
“Building a diverse learning community by encouraging students to open their eyes to explore, their minds to create, and their hearts to accept.”

NEW NASHUA MIDDLE SCHOOL

SCHEDULE



“Building a diverse learning community by encouraging students to open their eyes to explore, their minds to create, and their hearts to accept.”



Schedule |

“Building a diverse learning community by encouraging students to open their eyes to explore, their minds to create, and their hearts to accept.”



 HARRIMAN

